

GE Inspection Technologies

Phased Array Probe Specification

Linear Phased Array					
				inch	mm
Part Number	115-100-012	Primary Element Count	16		
Number of Elements	16	Primary Pitch	0.0315	0.8000	
Frequency (MHz)	5	Primary Kerf	0.0020	0.0500	
Connector	Tyco				
Cable Type	021-085-351 Coax, 38 Gauge, 50 Ohm, 18 Conductors				
Cable Length	3 meters				

Element Passive Aperture	0.5000	12.7000
--------------------------	--------	---------

Array Configuration	1D
---------------------	----



17G01HLG

Certification of Conformity

115-100-012

5MHZ16EL.8MMPX12.7MM-PHASOR

Date Tested	02/01/2019
Operator	MDL *
Test Specification	0513219
Test Specification Rev	
Oscilloscope Serial Number	8747-DP310-001
Oscilloscope Cal Date	12/18/2019
UTA Serial Number	DH0100
UTA Cal Due Date	9/14/2019
Software Designation	FNT0101
Software Rev	A

GE Sensing EMEA
Sensing House
Shannon Free Zone East
Shannon
Co. Clare
Ireland

For Customer Service, call 1-866-243-2638
www.gemeasurement.com



17G01HLG

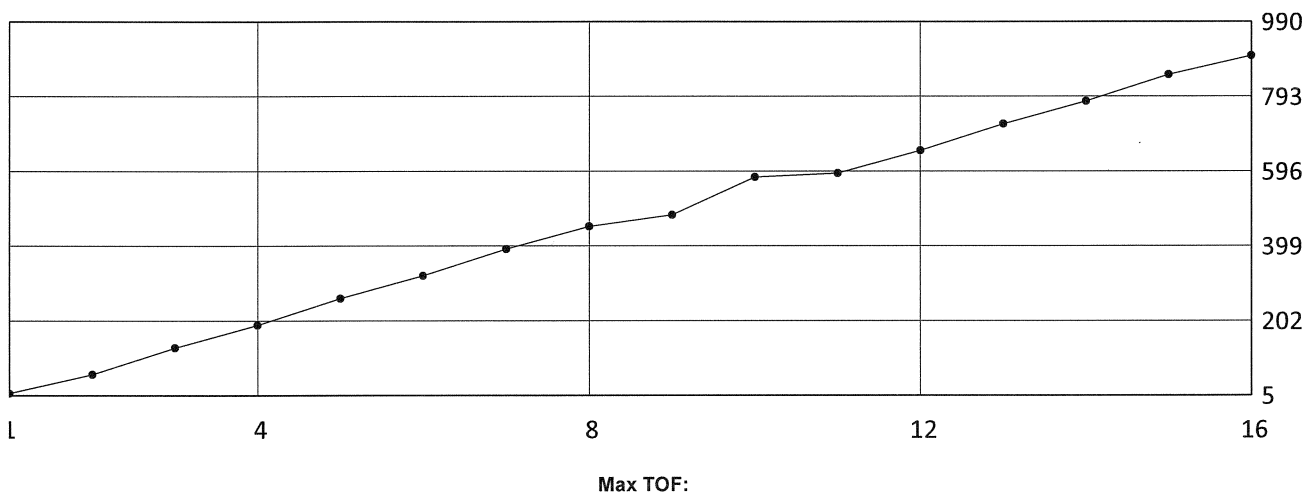
Certification of Conformity

115-100-012

5MHZ16EL.8MMPX12.7MM-PHASOR

February 01 2019

TOF Wiring Verify



Max TOF:

We certify that the product mentioned was subjected to a quality inspection and testing procedure. It conforms to our manufacturing drawings and meets our specifications. All measuring tools used for testing are calibrated and traceable to national or international standards. Our quality management system is certified according to DIN EN ISO 9001.

GE Sensing EMEA
Sensing House
Shannon Free Zone East
Shannon
Co. Clare
Ireland

For Customer Service, call 1-866-243-2638
www.gemeasurement.com



17G01HLG

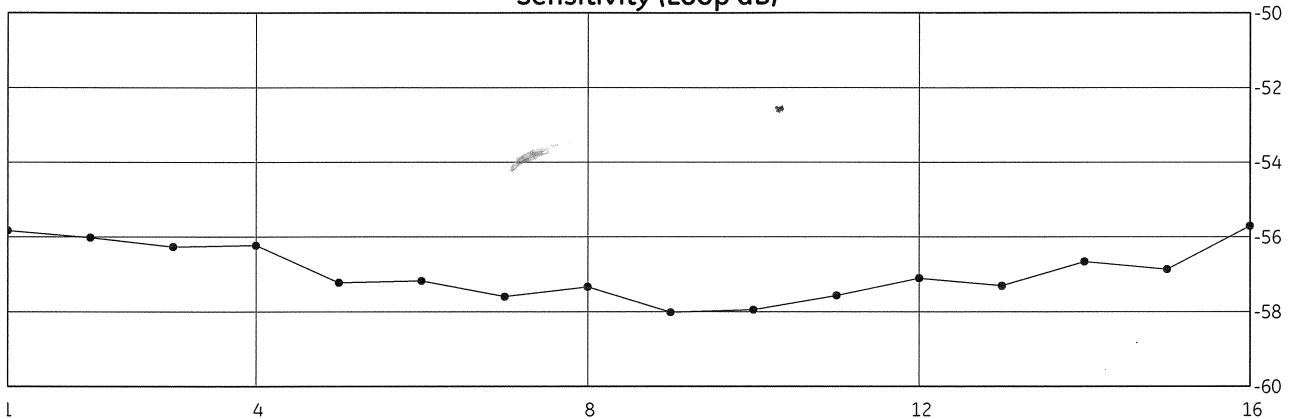
Certification of Conformity

115-100-012

5MHZ16EL.8MMPX12.7MM-PHASOR

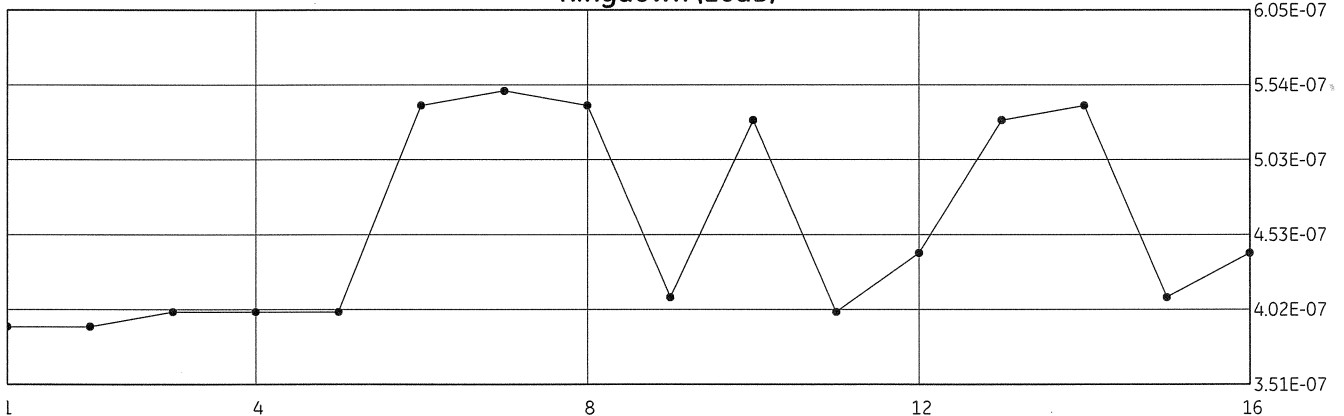
February 01 2019

Sensitivity (Loop dB)



Min: -58.02 Max: -55.71 Mean: -56.93

Ringdown (20dB)



Min: 3.90E-07 Max: 5.50E-07 Mean: 4.57E-07

We certify that the product mentioned was subjected to a quality inspection and testing procedure. It conforms to our manufacturing drawings and meets our specifications. All measuring tools used for testing are calibrated and traceable to national or international standards. Our quality management system is certified according to DIN EN ISO 9001.

GE Sensing EMEA
Sensing House
Shannon Free Zone East
Shannon
Co. Clare
Ireland

For Customer Service, call 1-866-243-2638
www.gemeasurement.com



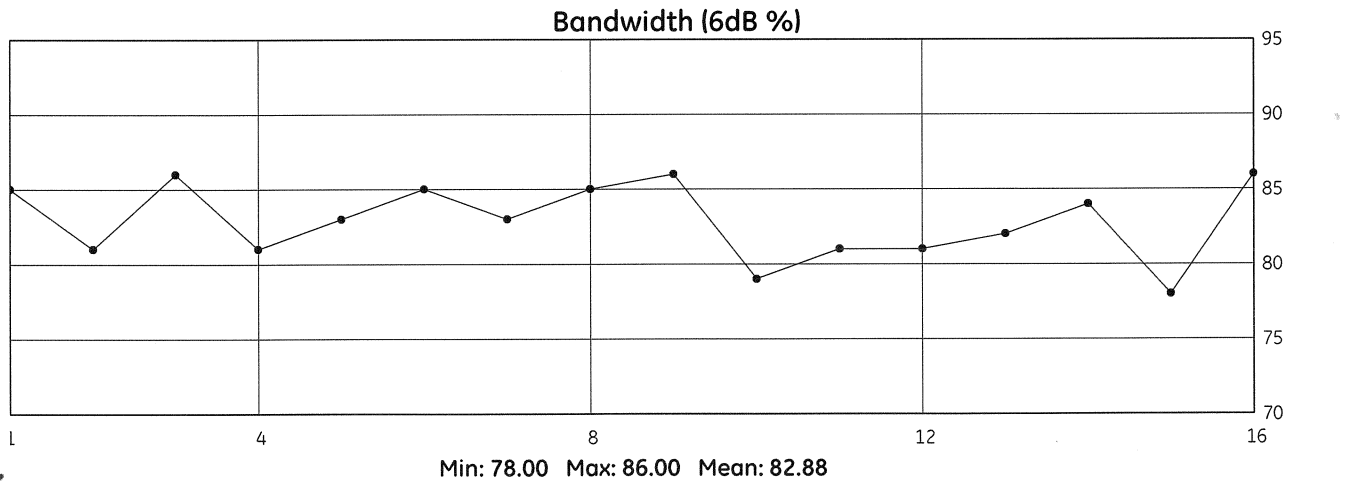
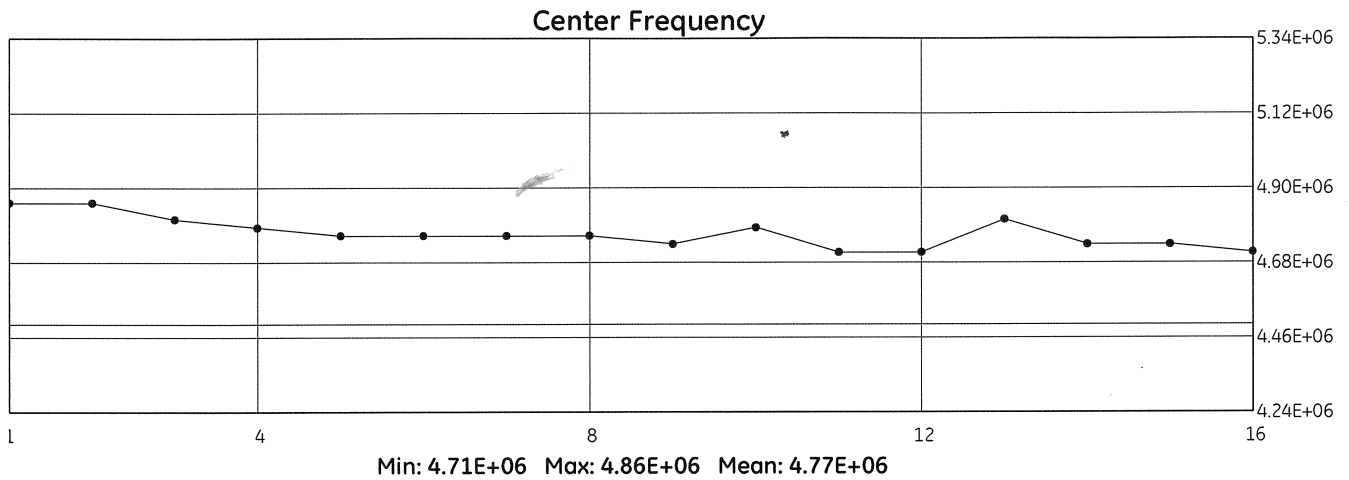
17G01HLG

Certification of Conformity

115-100-012

5MHZ16EL.8MMPX12.7MM-PHASOR

February 01 2019



We certify that the product mentioned was subjected to a quality inspection and testing procedure. It conforms to our manufacturing drawings and meets our specifications. All measuring tools used for testing are calibrated and traceable to national or international standards. Our quality management system is certified according to DIN EN ISO 9001.

GE Sensing EMEA
Sensing House
Shannon Free Zone East
Shannon
Co. Clare
Ireland

For Customer Service, call 1-866-243-2638
www.gemeasurement.com



17G01HLG

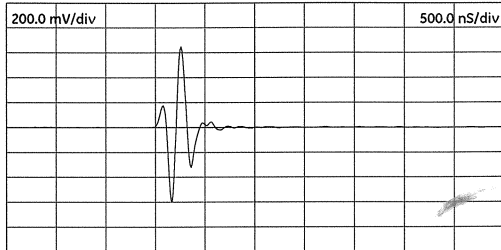
Certification of Conformity

115-100-012

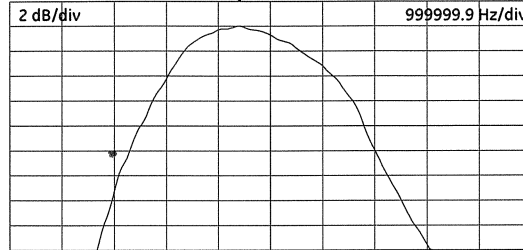
5MHZ16EL8MMPX12.7MM-PHASOR

February 01 2019

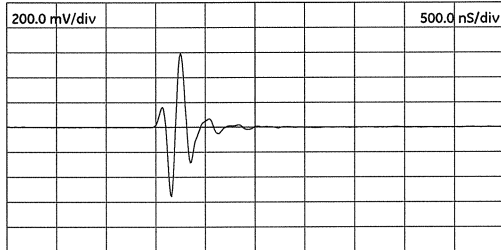
Element 5 Time Waveform



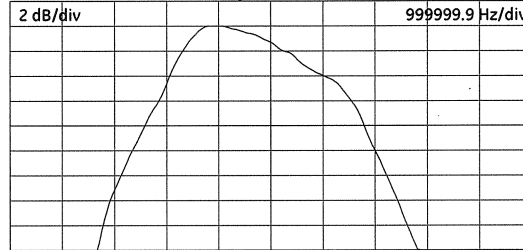
Spectrum



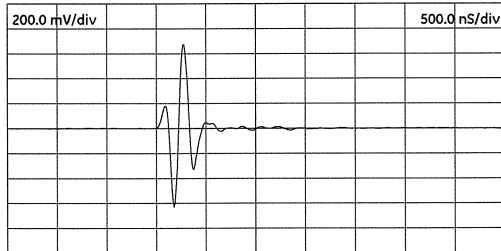
Element 10 Time Waveform



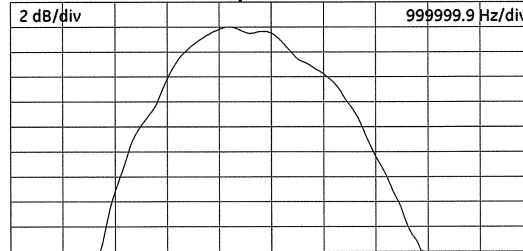
Spectrum



Element 15 Time Waveform



Spectrum



We certify that the product mentioned was subjected to a quality inspection and testing procedure. It conforms to our manufacturing drawings and meets our specifications. All measuring tools used for testing are calibrated and traceable to national or international standards. Our quality management system is certified according to DIN EN ISO 9001.

GE Sensing EMEA
Sensing House
Shannon Free Zone East
Shannon
Co. Clare
Ireland

www.gemeasurement.com